



ROYAL
HOSPITAL
SCHOOL

INTERNATIONAL **ADMISSIONS**

A CO-EDUCATIONAL BOARDING AND DAY SCHOOL
FOR 11 TO 18 YEAR OLDS IN SUFFOLK, UK

HEADMASTER'S WELCOME

DEAR PARENT,

Thank you for considering the Royal Hospital School for your child.

Our school has a history spanning over 300 years but is a future-facing school intent on developing the skills and attributes that will enable our pupils to enter the global workplace with confidence. We aim to stretch and challenge our pupils both academically as well as developing important personal skills such as collaboration, teamwork and highly effective communication. This is why we balance our curriculum between academic study and a large co-curricular programme.

We are a community which spans the globe but is fortunate to share a wonderfully safe rural campus in Suffolk, overlooking the River Stour. Our boarding houses are spacious with at least three members of staff living alongside our boarders and contributing to a vibrant and welcoming community.

I look forward to welcoming you to the Royal Hospital School.



Mr Simon Lockyer
Headmaster



OUR TRULY GLOBAL SCHOOL

A WARM WELCOME

I am fortunate to work within the International Admissions Team at RHS. As the International Registrar, I am here to help your child and family through the admissions procedure, from first looking at the school through to the application process, the test and interview stages, to the moment your child arrives and is happily settled at RHS.

Our experienced team has assisted many overseas pupils from all over the world to become a part of RHS and to flourish. We can help with any questions or concerns you may have and ensure a relaxed and smooth enrolment process.

If you require any further guidance, please do not hesitate to make contact with me at eallinson@royalhospitalschool.org, or +44 (0) 1473 326179



Mrs Emily Allinson
International Registrar





ACADEMIC PATHWAYS

RHS is a senior school that offers GCSEs, iGCSEs, A Levels and BTEC courses. As well as offering the courses listed, we also accept pupils for shorter periods of time in order for them to experience life in a British boarding school. This is the perfect opportunity to improve their English before returning to their own school having broadened their skills both in and out of the classroom.

YEARS 7, 8 & 9 (AGES 11-14) - KEY STAGE 3

A good time to join and improve English before Key Stage 4

YEARS 10 & 11 (AGES 14-16) - GCSE PROGRAMME

A focus on a range of subjects for GCSE examinations

YEAR 11 (AGES 15-16) - ONE-YEAR COURSE TO STUDY SEVEN GCSEs

A condensed study period prior to GCSE examinations

YEARS 12 & 13 (AGES 16-18) - A LEVEL AND BTEC COURSES

A choice of 25 subjects to study prior to university entry

ENGLISH SUPPORT

If English is not your first language, we provide specialist English lessons alongside your main subjects in the English as an Additional Language (EAL) department. These help with your chosen subjects by providing useful vocabulary and subject-specific support and you can also work towards an IELTS qualification which is needed for entry to university in the UK.

GCSE

MIDDLE SCHOOL

(YEARS 10 & 11)

The Middle School Key Stage 4 courses are in line with national priorities in education, with pupils taking nine GCSEs. In Year 10, pupils take the following core subjects: English (most study language and literature as separate GCSEs), Mathematics and Science (pupils can choose to take the separate sciences or the double award).

Four additional GCSE subjects are chosen from Art, Business, Classical Civilisation, Computer Science, Design & Technology, Drama, Food Preparation and Nutrition, French, Geography, History, Latin, Media Studies, Music, PE (Academic), Religious Studies and Spanish. If pupils select separate sciences, then one of their four optional subjects will be the third science.

The percentage of GCSE grades 9-4 has been consistently around 90-97%.

All Year 10 and 11 pupils have two games sessions each week, one of which is on a Saturday afternoon. Pupils in Year 10 have two Physical Education (PE) lessons and one Personal, Social, Health and Economic education (PSHE) lesson per fortnight whereas Year 11 pupils have two PSHE and one PE lesson per fortnight. Pupils in Year 10 all participate in Combined Cadet Force (CCF) and in Year 11 pupils choose to continue with CCF or to participate in the school's Service programme.

ONE-YEAR GCSE COURSE (YEAR 11)

This one-year intensive course suits an international pupil with a good level of English. The course results in seven GCSEs with the core subjects being studied (English Language, Mathematics and Double Science) along with History, Spanish/French/Latin, and their native language. Alongside the aforementioned subjects, our pupils will be involved in games, PE, Art, PSHE and CCF. It is a predominantly integrated course, with extra lessons in Science and History.

REPORTING

The reporting system exists in order to set pupils realistic, yet stretching, targets in each subject and to keep parents informed of their son's or daughter's progress in relation to those targets. It aims to provide precise and clear information for both pupils and parents using Challenge Grades, Performance Indicators and Attitude to Learning Indicators for each subject. Reports and assessments are issued at regular intervals throughout the academic year.

NAVIGATING SUCCESS

A LEVEL

SIXTH FORM

(YEARS 12 & 13)

We offer A Levels in Art (fine art/photography/textiles), Biology, Business, Chemistry, Classical Civilisation, Computer Science, Economics, English Language, English Literature, French, Further Mathematics, Geography, History, Latin, Mathematics, Music, Physics, Politics, Product Design, Psychology, Religious Studies and Spanish.

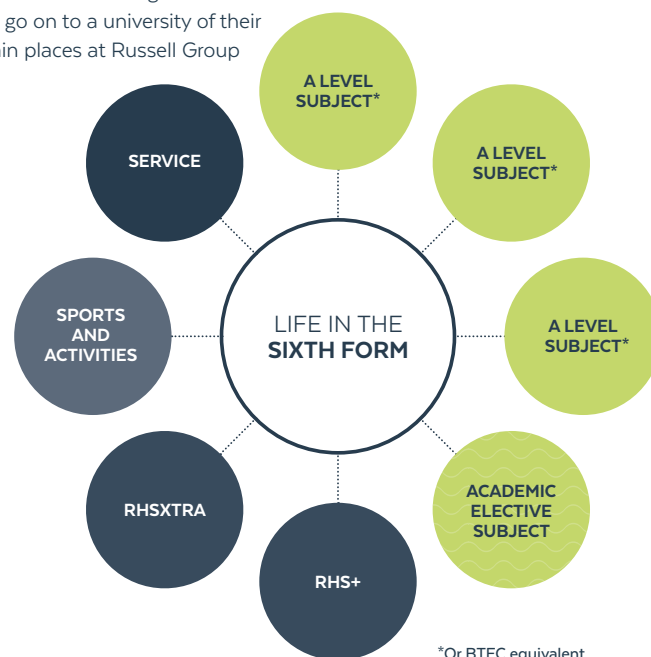
We also offer the BTEC Level 3 National Extended Certificate in Creative Digital Media Production (equivalent to one A Level), the BTEC Level 3 National Extended Certificate in Sport (equivalent to one A Level) and the BTEC National Diploma in Enterprise and Entrepreneurship (equivalent to two A Levels).

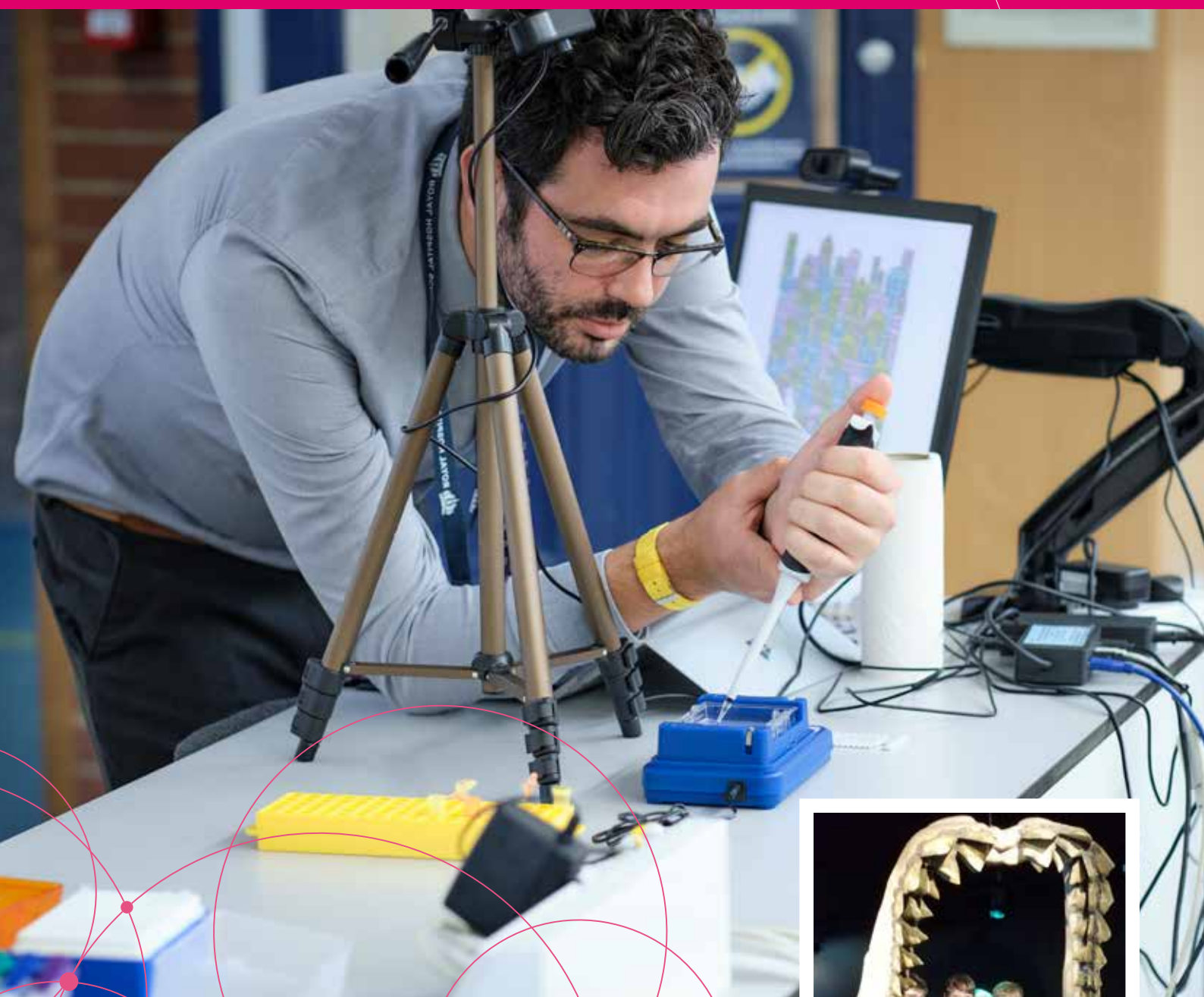
Pupils select three A Level subjects (or the equivalent) and these three core subjects are supplemented with an elective academic subject which could be: Further Mathematics A Level; a Level 3 Extended Project Qualification (EPQ); a Level 3 Core Maths certificate; a Level 3 certificate in higher sports leadership; an IELTS qualification; a BTEC Level 2 First Award in Performing Arts; or RHS' Learn to Sail bespoke suite of watersports qualifications.

A third of all grades achieved are A* or A grade and an average of 97% of pupils go on to a university of their choice. Of these, 50% gain places at Russell Group or other top universities.

To complement the core curriculum and the elective subjects, we have devised a programme for Year 12 pupils, RHS+, which is aimed at preparing pupils for the independence of university and the world of work. It provides a carousel of lessons which cover careers advice; digital effectiveness and online safety; coping with stress; mindfulness; financial management; and cooking on a budget.

All pupils have the opportunity to get involved in voluntary work, leadership and service, as well as balancing their academic commitments with sport and physical activity (two games sessions each week, one of which is on a Saturday afternoon). We believe that we offer an excellent all-round sixth form education which prepares our pupils for life beyond school.



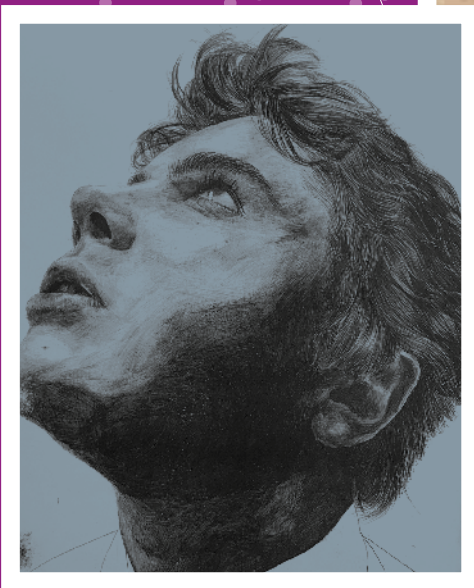


A PASSION FOR LEARNING



NAVIGATING SUCCESS

INSPIRING ARTS AND D&T



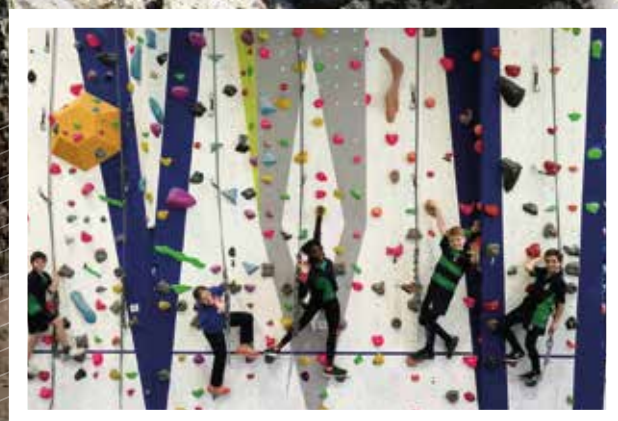
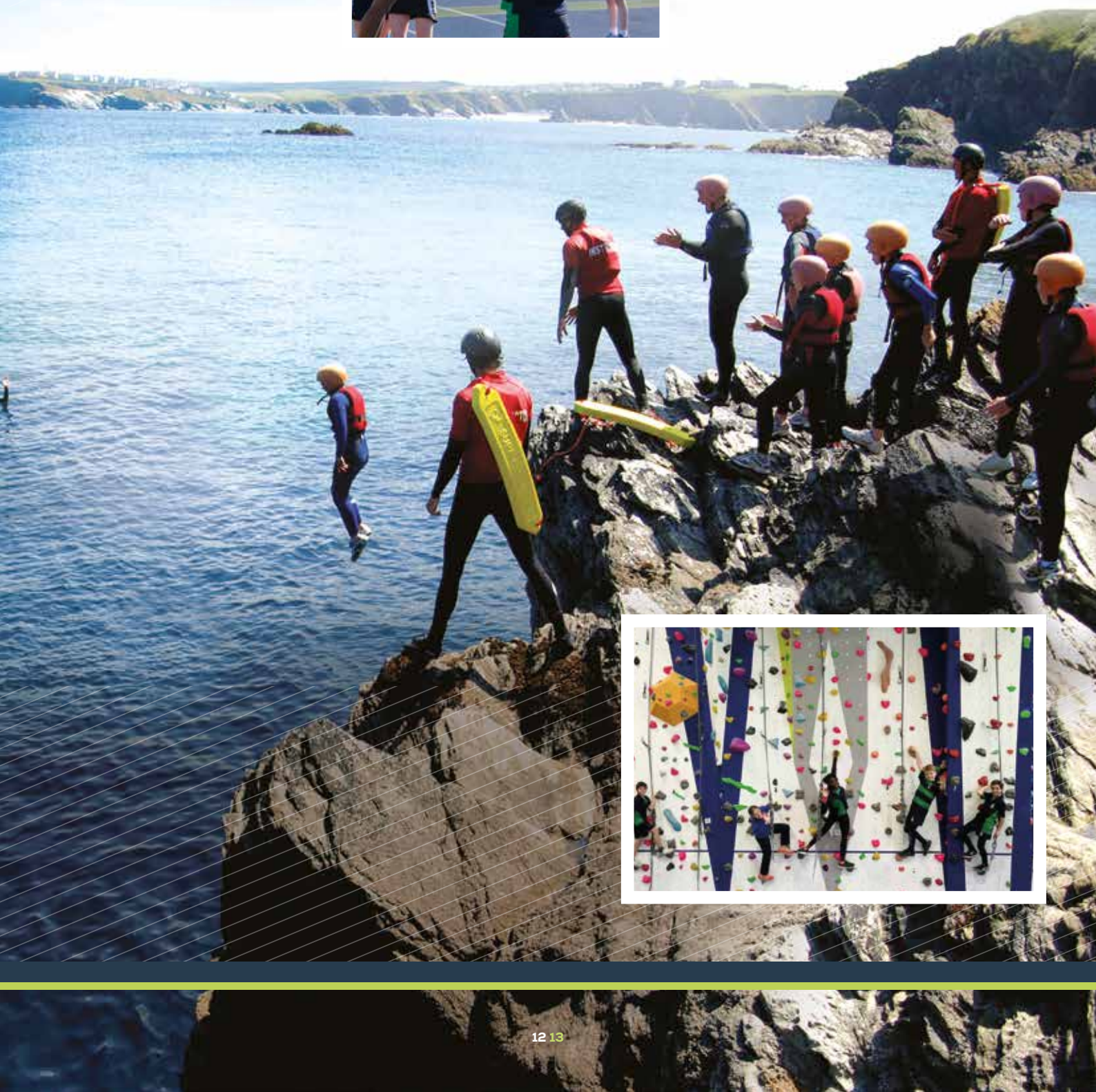
NAVIGATING SUCCESS

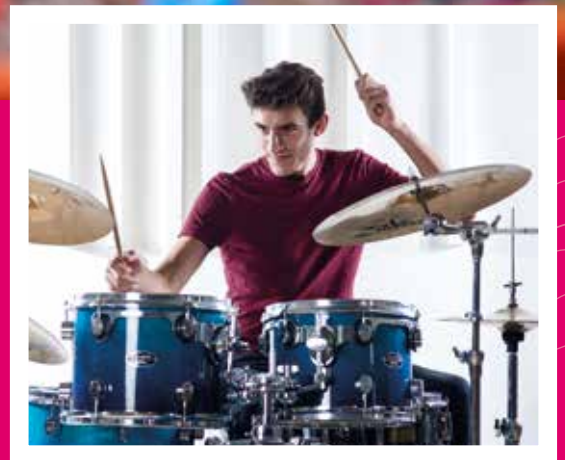


OUTSIDE THE CLASSROOM

NAVIGATING SUCCESS







MUSICAL EXCELLENCE

NAVIGATING SUCCESS



MAKING WAVES

NAVIGATING SUCCESS





JUNIOR BOARDING BLAKE HOUSE (YEARS 7 & 8)

This co-educational entry house has routines and pastoral care which focus specifically on the needs of 11-13 year olds. The house provides a caring, well-managed environment, which enables easier progression from primary to secondary school. Boarders sleep in rooms of six or eight beds, all of which are located on the first floor of the house together with shower and bath facilities and the laundry. The boys are in one wing and the girls in the other. Day pupils have lockers for both books and sports kit on the ground floor of the house as well as changing facilities. Both day pupils and boarders share the large common room areas which have television, games, computer and quiet rooms.

THE SCHOOL DAY

The general pattern of the day is as follows but this may change subject to age group and personal commitments:

07:45	Breakfast for boarders.
08:20	Day pupils arrive by this time.
08:25	House meeting and roll call.
08:40	Assembly, Chapel or tutor meeting.
09:00	Lessons.
10:50	Break.
11:15	Lessons.
13:05	Lunch.
14:05	Roll call.
14:15	Lessons or games.
16:10	Prep sessions, practice sessions and activities.
18:15	Day pupil transport departs. Supper for boarders.
19:00	House meeting for boarders followed by prep (or activities for Year 7 & 8 boarders).





SENIOR BOARDING HOUSES (YEARS 9-12)

Year 9 full and weekly boarders moving up from Blake House, or new pupils joining the school in Years 9-12, enter one of three boys' (Collingwood, Hawke and St Vincent) or two girls' (Hood and Howe) senior houses, each for around 60 boarding pupils. There are leisure facilities that typically include day rooms, table tennis and pool tables, kitchens, television rooms and a house library. Each boarder has their own self-contained working and sleeping accommodation. Normally, the younger pupils will be in four-bedded rooms with bath and shower facilities nearby and the older age groups will be in double or single study bedrooms with en-suite facilities. All boarding houses have their own laundry facilities.

ACTIVITIES PROGRAMME

A wide range of activities are held after school and everyone is encouraged to try something new. The list below gives an indication of the activities which may take place but these vary from term to term and are subject to numbers, age groups and the availability of suitable staff.

Amnesty International	Computing	History Club	Saxophone Ensemble
Art & Design	Contemporary Dance	Horse Riding	Science
Badminton	Cookery	Jewellery Making	Scouts
Ballet	Crafts	Judo	Scuba Diving Club
Band	CREST Silver and Gold Award	Kickboxing	Shooting
Basketball	Cricket Nets	Lifesaving	Show Choir
Big Band	Debating Society	Literary Society	Singing
Board Games Club	Design & Technology	Medical Society	Sports Leadership
Bookworms	Devizes to Westminster	Model United Nations	Squash
Brass Ensemble	Drama	Multi Gym	STEM/CREST Club
Canoeing	Dry Skiing	Music Technology Club	Strength and Conditioning
Ceramics	Duke of Edinburgh's Award	Musicianship Surgery	String Ensemble
Chamber Choir	Eco Warriors	Orchestra	Studd & Riddle Society
Chapel Choir	Film Club	Paired Reading	Swim Squad
Chess	Five-a-side Football	Pop Choir	Table Tennis
Chinese Calligraphy	Flute Ensemble	Racketball	Tennis Lessons
Choral Society	Football	Robotics Club	Textiles
Classics Club	Free Swim	Rock Group	Trampolining
Climbing	Geography Club	Rugby Sevens	Tycoon in Schools
Combined Cadet Force	Golf	Running Club	Woodwork
Community Action Team	Guard	Sailing	Yoga Exercise



NELSON BOARDING HOUSE (YEAR 13)

In their final year of Sixth Form, both boys and girls, boarders and day pupils, are accommodated in Nelson House, where pupils are encouraged to be more independent, with the aim of preparing them for life beyond school. One wing of the house is for girls and the other for boys, with central common room areas, kitchens, a laundry room and quiet study rooms for day pupils. All boarding pupils are accommodated in individual rooms.



“ This school offers a lot of help and care, especially as it's such a diverse and very welcoming community. My main concern was my English, because it is my second language but everyone makes so much effort to help and understand you.

The hardest thing was missing my family and of course my friends and country, but here to my surprise I feel like RHS is my second home and I love being here. I recommend RHS to anyone, no matter what country or language, who is feeling adventurous and open for new experiences. ”

REGINA YEAR 9, MEXICO

“ The biggest difference between lessons in France and the UK is that at RHS many of the teachers live at the school so we interact with them in activities outside the classroom. A stronger relationship can be seen in lessons because they're not just a teacher but a person who is able to understand you and can adapt their lesson just for you - that's much more personal. ”

ANDREA, YEAR 8, FRANCE



LOCATION, LOCATION LOCATION

Set in 200 acres of Suffolk countryside overlooking the Stour Estuary and with easy access to London and Cambridge, the Royal Hospital School is a leading co-educational boarding and day school providing a full and broad education.



TRANSFERS TO AIRPORTS AND TRAIN STATIONS FOR BOARDERS

Transfers to and from all the main London airports (Gatwick, Heathrow, Stansted and Luton), and Ipswich and Manningtree train stations (both with direct lines to London) can be arranged for boarding pupils at the start and end of each term and half term.

NAVIGATING SUCCESS



HOW TO APPLY

Our admissions process is simple and straightforward. The main points of entry are Year 7 (age 11), Year 9 (age 13) and Year 12 (age 16). We are conscious that pupils from overseas may wish to join us outside of these standard entry points and also for different lengths of time, we therefore consider applications on a flexible basis.

SIXTH FORM ADMISSIONS

We encourage prospective pupils to manage their own applications which comprise a visit, interview, provision of current school report and predicted grades. Offers are provisional upon the applicant achieving the required GCSE results.

Around 12% of pupils at the Royal Hospital School are from overseas with some 30 nationalities represented. Everyone is encouraged to appreciate differences in culture and societies and develop a global outlook.

Our international pupils are, of course, full boarders and are mainly in the senior part of the school. We normally accept around 20 international pupils into the Sixth Form each year and these are spread across the school, ensuring that no one nationality is over-represented in a year group or house.

TRAVEL

Getting to and from school is an important factor for our international pupils. Our dedicated Pupil Transport service can help with airport transfers and travel to guardians where necessary.

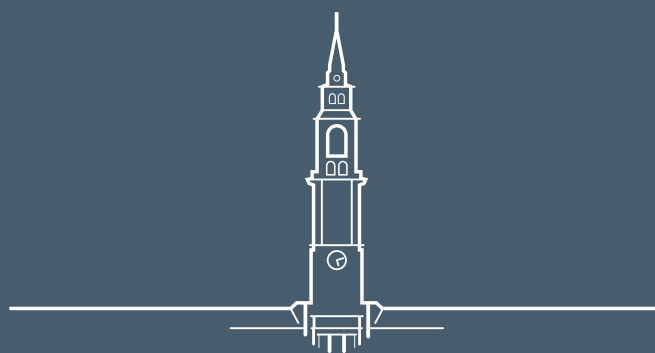
THE APPLICATION PROCESS

Our admissions process is simple and straightforward, with support for parents and pupils at every stage. Although each application is different, the usual process looks like this:

- Send through two copies of recent school reports, a completed registration form, a copy of the pupil's passport and birth certificate, along with the required registration fee.
- Online tests in English and Mathematics to be completed at the pupil's current school, or at a solicitors.
- Interview conducted by the Head of Year or Head of English as an Additional Language (EAL) either in person or via Skype.
- References are requested from current school
- Offer letter is signed by the Headmaster and sent to the pupil's parents.
- Guardian and medical information must be provided.
- Acceptance letter and deposit are returned.
- The joining pack is sent online to the family with all the necessary forms.
- All pupils who require a Tier 4 Visa to study in the United Kingdom will be put in touch with TTP Law who will manage the visa process and release the Confirmation of Acceptance for Studies (CAS).

VISIT US

Although sometimes not physically possible, we would always recommend a tour of our amazing campus. There's really nothing like seeing the school in person to understand what the school offers. If you would like to book a visit or to find out more about RHS, please do not hesitate to make contact with Emily Allinson, our international registrar, by email to eallinson@royalhospitalschool.org, or +44 (0) 1473 326179.



WWW.ROYALHOSPITALSCHOOL.ORG